



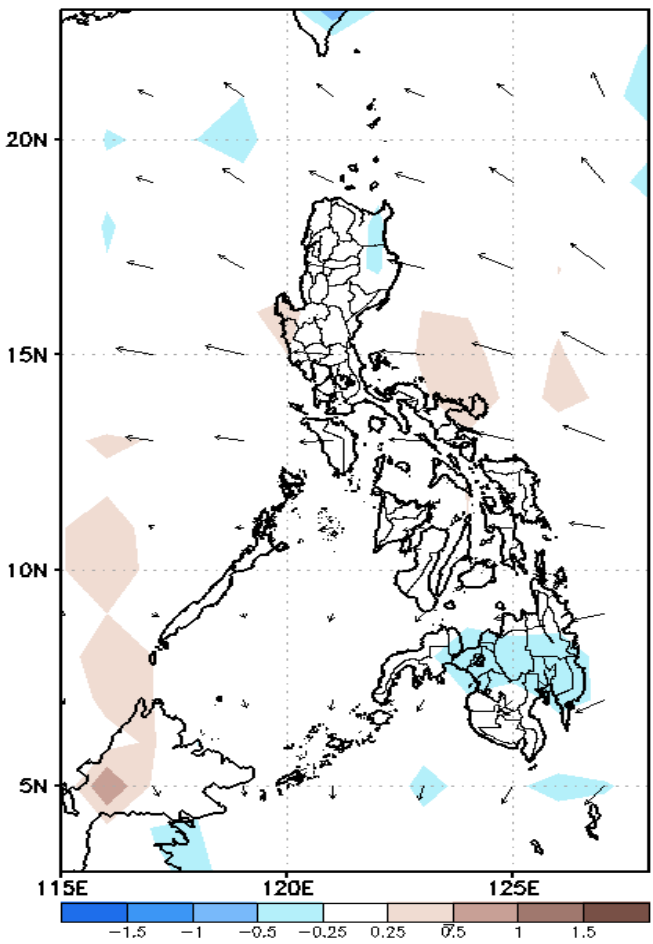
Week 1 & Week 2 Forecast for the Philippines using GEFS Model



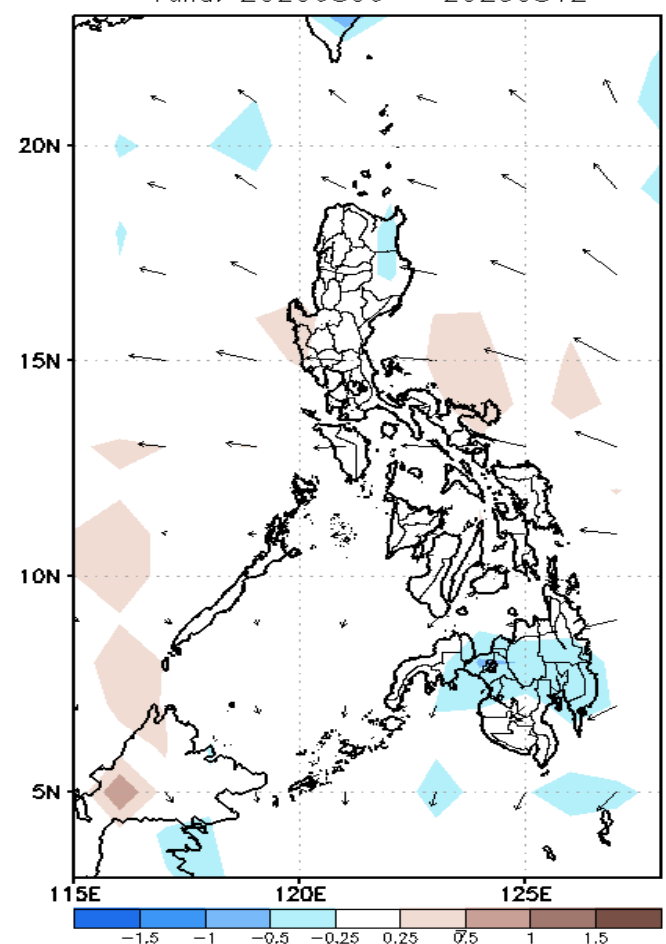
GEFS Week-1 Forecasts: Divergence & Wind Anomaly

Week 1: Aug 06-12, 2020

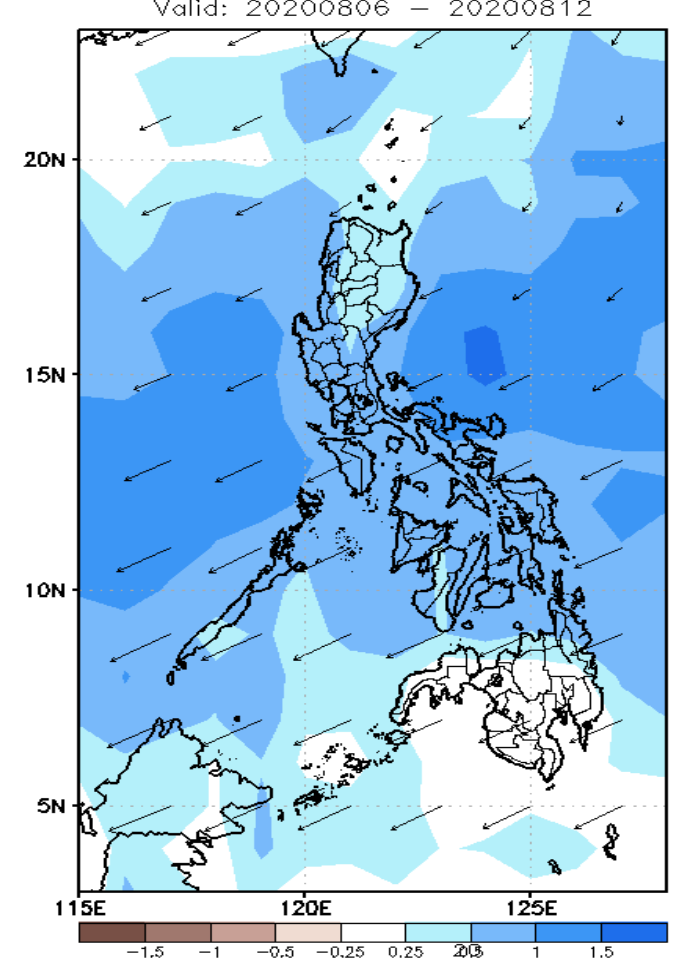
GEFS Week-1 850-hPa Divergence and Wind Anom
Valid: 20200806 - 20200812



GEFS Week-1 700-hPa Divergence and Wind Anom
Valid: 20200806 - 20200812



GEFS Week-1 200-hPa Divergence and Wind Anom
Valid: 20200806 - 20200812



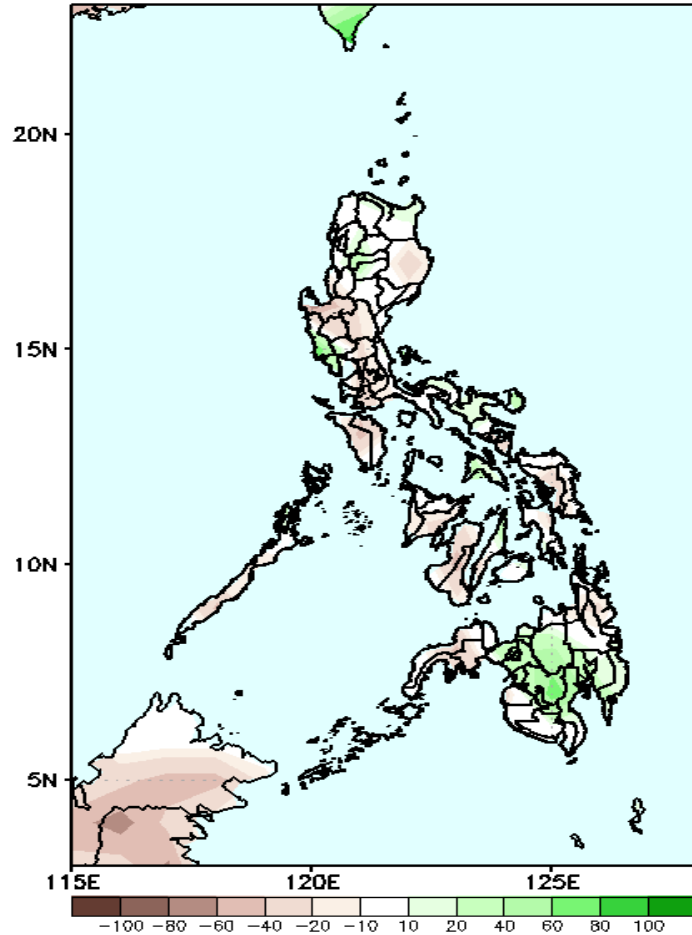
Upper level (200 hPa) Divergence suggest likelihood of precipitation in most parts of Luzon and Visayas. Southwest monsoon affecting most parts of the country during the forecast period.



Precipitation Anomaly and Exceedance Probability > 25/50 mm

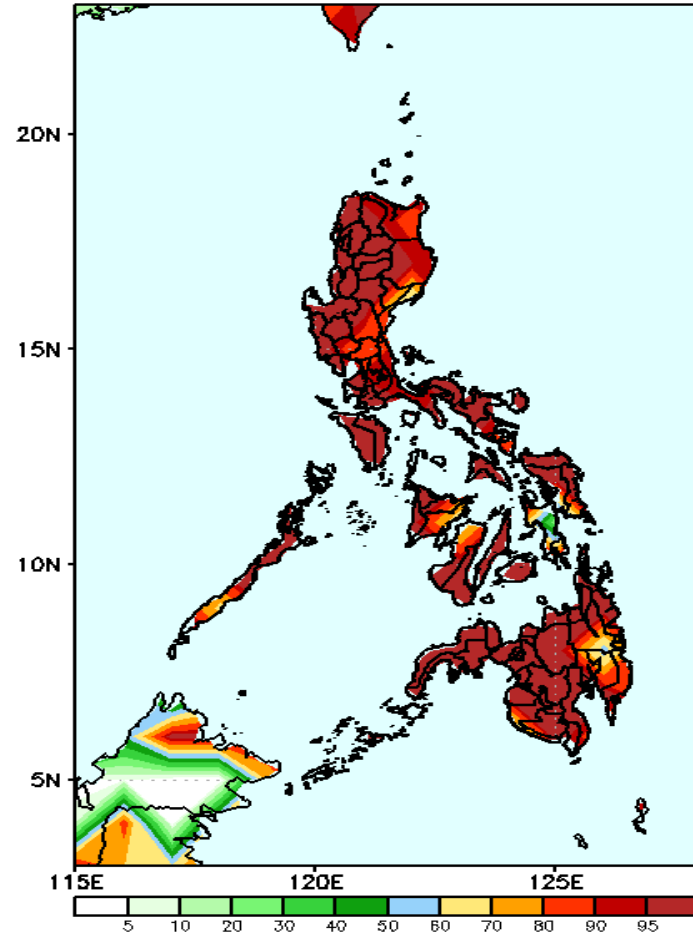
Week 1: Aug 06-12, 2020

GEFS Week-1 Precip Anomaly
Valid: 20200806 - 20200812



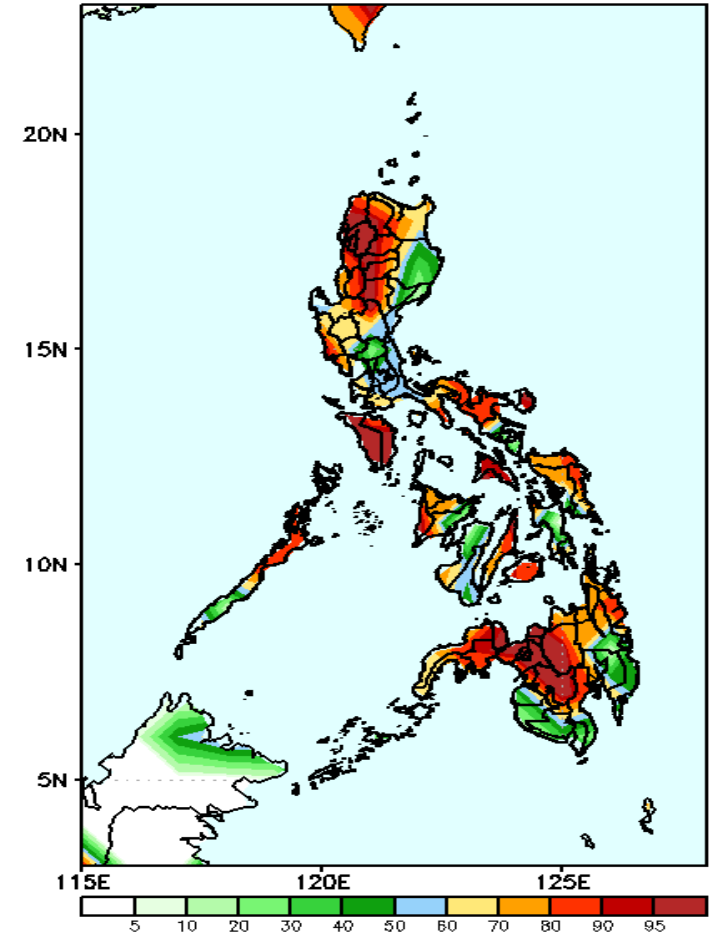
Rainfall deficit of 10-30mm in most parts of Luzon and Visayas while increase of rainfall of 20-80mm in Bukidnon, North Cotabato and Lanao provinces is expected during the forecast period.

GEFS Week-1 Exceedance Prob. > 25mm
Valid: 20200806 - 20200812



High probability of rainfall to exceed 25mm in most parts the country is expected during the forecast period.

GEFS Week-1 Exceedance Prob. > 50mm
Valid: 20200806 - 20200812

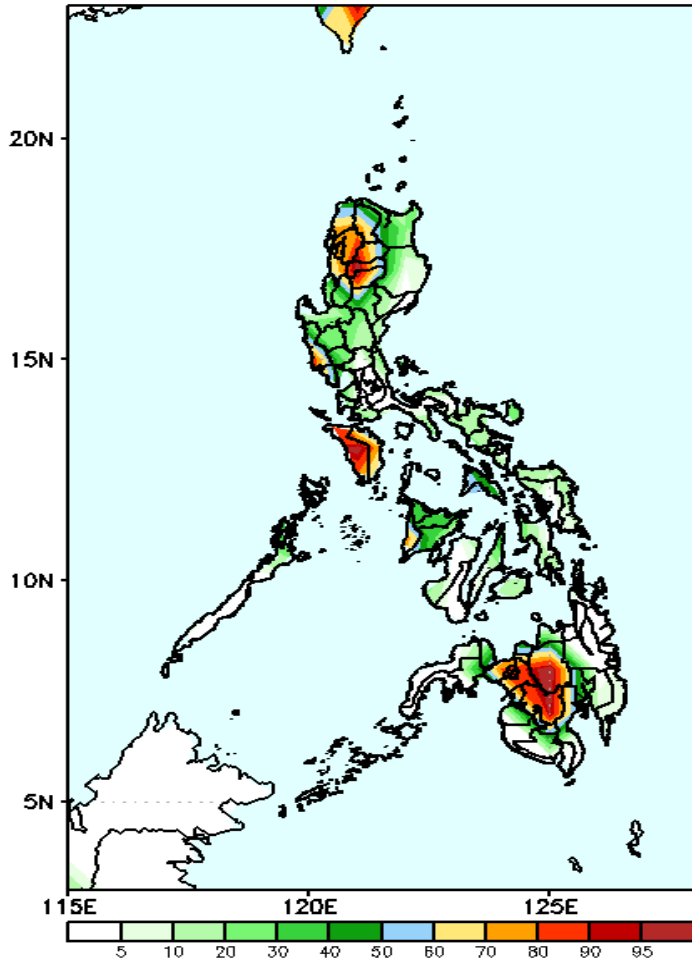


High probability of rainfall to exceed 50mm in most parts of the country is expected except in Isabela, southeastern Luzon, Davao Region and South Cotabato and Sultan Kudarat during the forecast period.

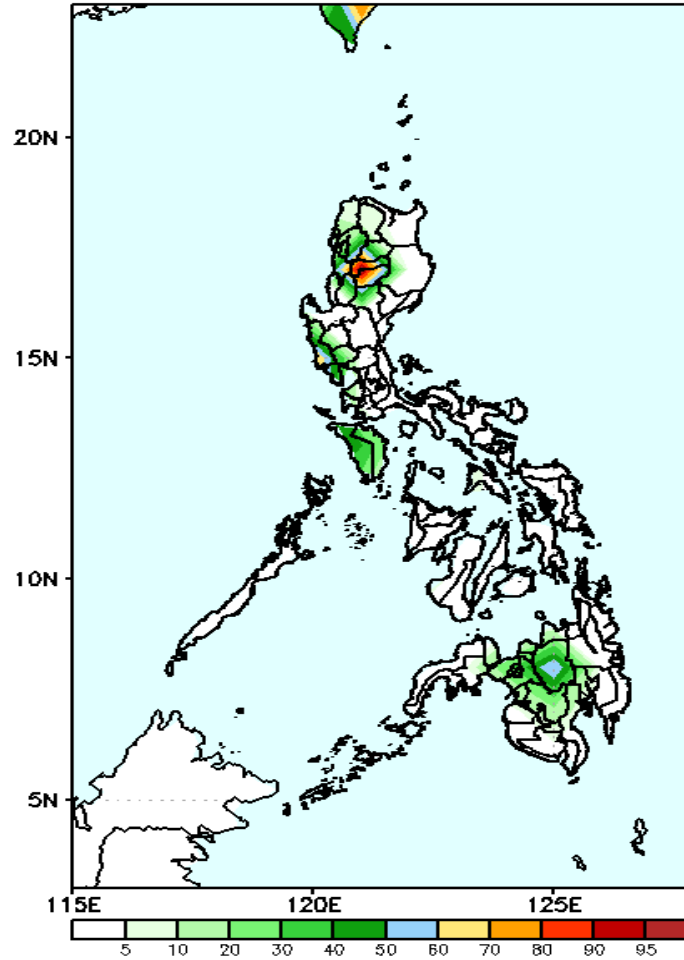
Exceedance Probability > 100/150/200 mm

Week 1: Aug 06-12, 2020

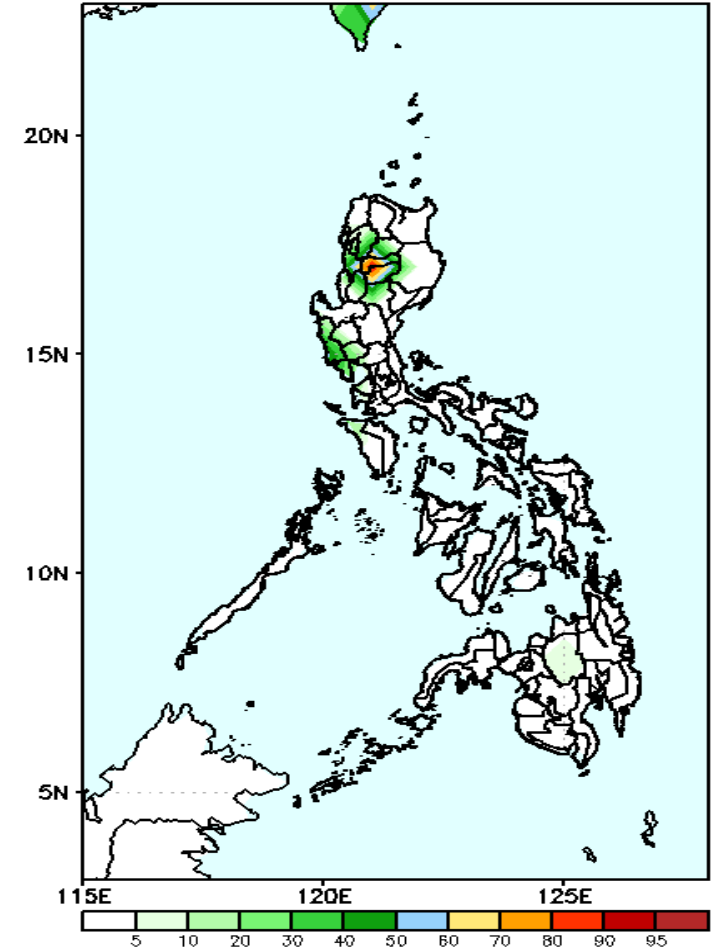
GEFS Week-1 Exceedance Prob. > 100mm
Valid: 20200806 - 20200812



GEFS Week-1 Exceedance Prob. > 150mm
Valid: 20200806 - 20200812



GEFS Week-1 Exceedance Prob. > 200mm
Valid: 20200806 - 20200812



High probability of rainfall to exceed 100mm in northwestern parts of Luzon, Mindoro and Bukidnon, North Cotabato and Lanao provinces while less likely for the rest of the country during the forecast period.

60-90 probability of rainfall to exceed 150mm in Mt. Province, Ifugao and Bukidnon while less likely for the rest of the country during the forecast period.

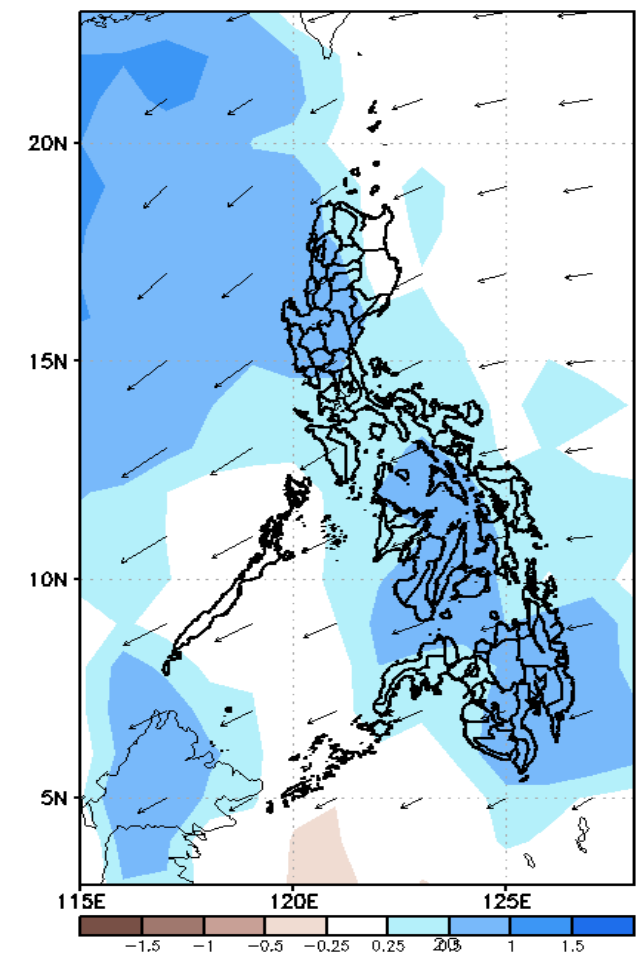
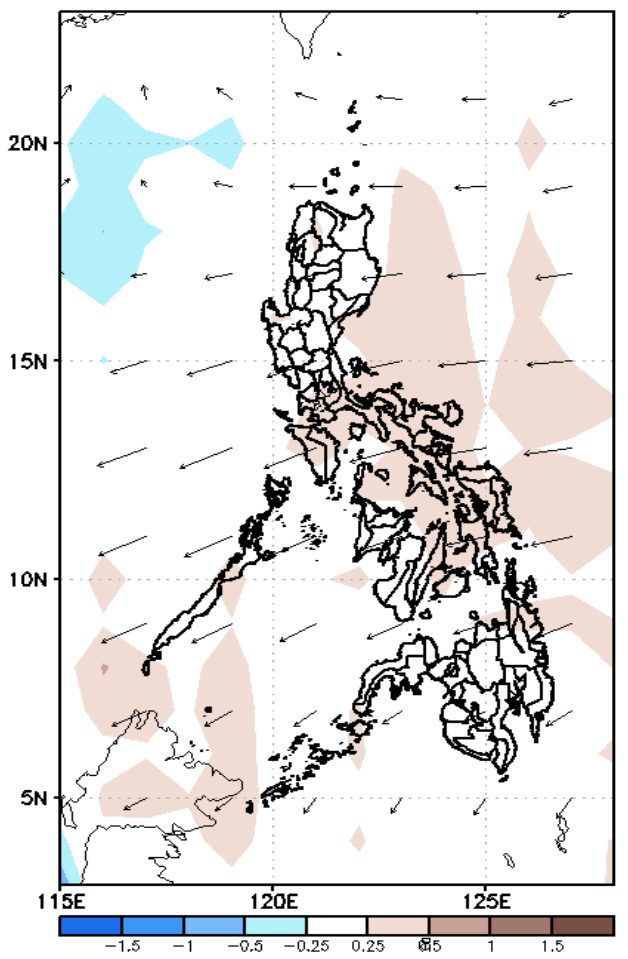
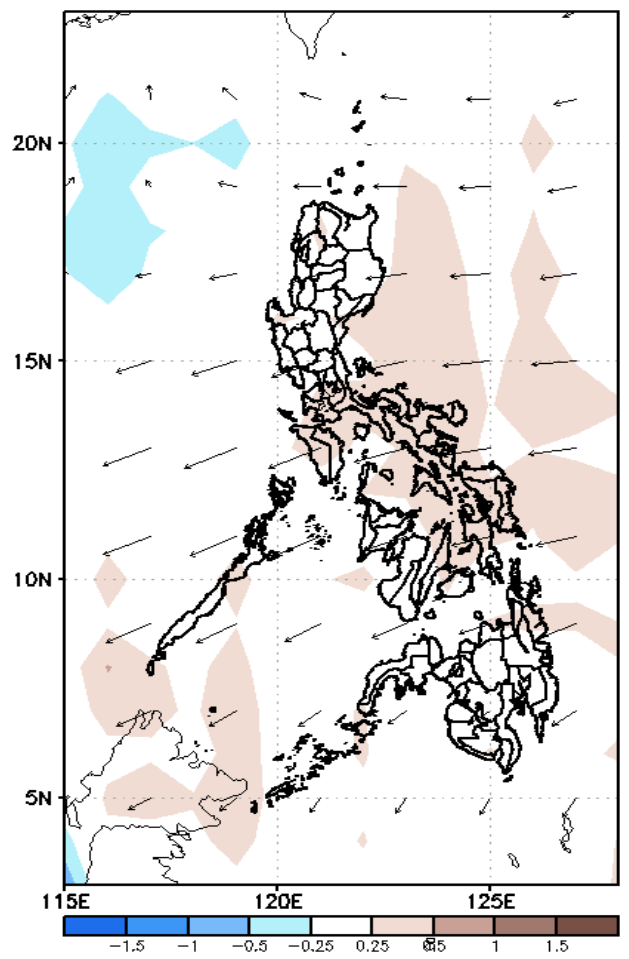
70-90 probability of rainfall to exceed 200mm in Mt. Province & Ifugao while less likely for the rest of the country during the forecast period.



GEFS Week-2 Forecasts: Divergence & Wind Anomaly

Week 2: Aug 13-19, 2020

GEFS Week-2 850-hPa Divergence and Wind Anomc Valid: 20200813 - 20200819 GEFS Week-2 700-hPa Divergence and Wind Anomc Valid: 20200813 - 20200819 GEFS week-2 200-hPa Divergence and Wind Anom Valid: 20200813 - 20200819

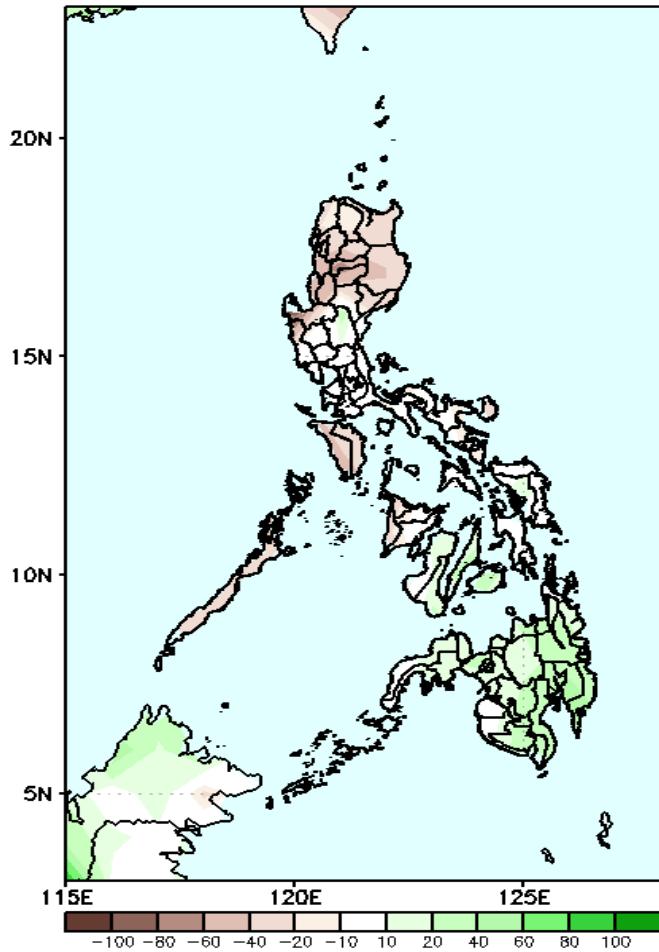


Upper level (200 hPa) Divergence suggest likelihood of precipitation in most parts of the country. Easterlies affecting most parts of the country during the forecast period.

Precipitation Anomaly and Exceedance Probability > 25/50 mm

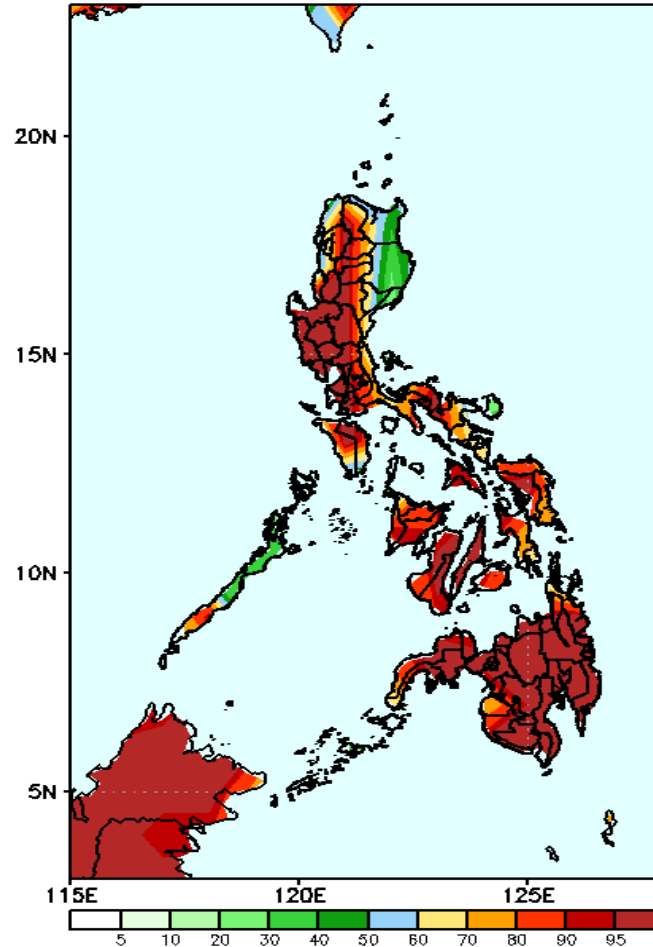
Week 2: Aug 13-19, 2020

GEFS Week-2 Precip Anomaly
Valid: 20200813 - 20200819



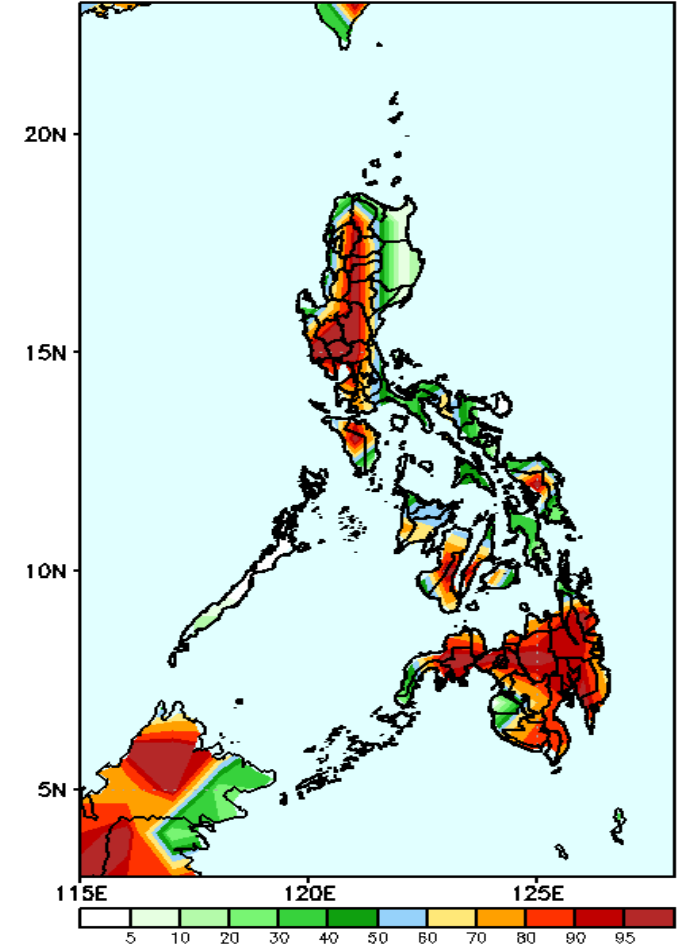
Rainfall deficit of up to 60mm in northern parts of Luzon and Mindoro while increase of rainfall of 20-60mm in most parts of Mindanao is expected during the forecast period.

GEFS Week-2 Exceedance Prob. > 25mm
Valid: 20200813 - 20200819



High probability of rainfall to exceed 25mm in most parts of the country is expected except in the northeastern parts of Luzon during the forecast period.

GEFS Week-2 Exceedance Prob. > 50mm
Valid: 20200813 - 20200819

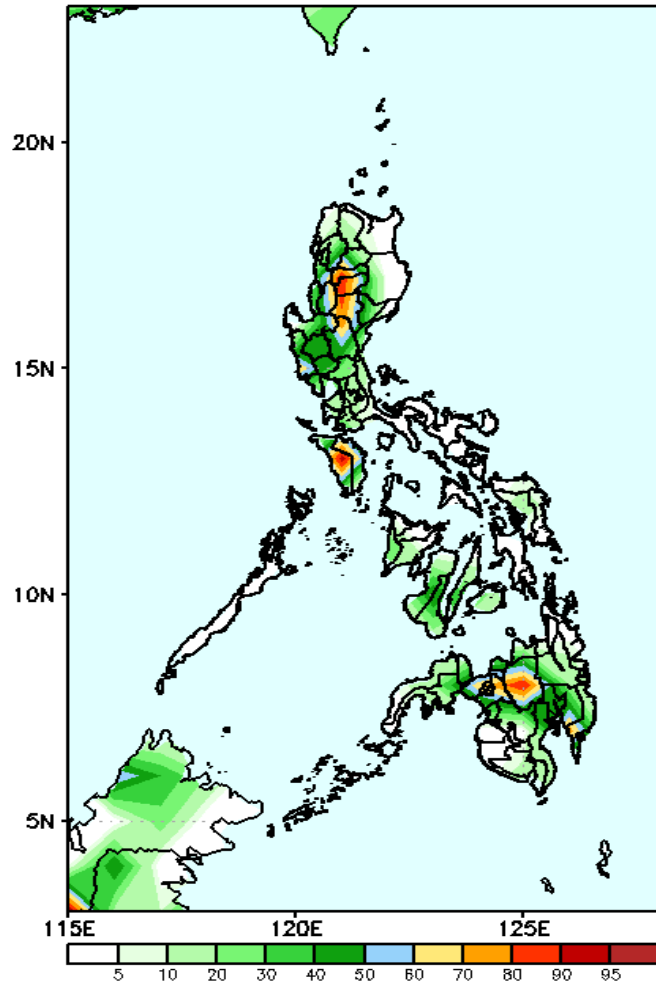


High probability of rainfall to exceed 50mm in most parts of western Luzon, in western Visayas and Samar and most parts of Mindanao while less likely for the rest of the country during the forecast period.

Exceedance Probability > 100/150/200 mm

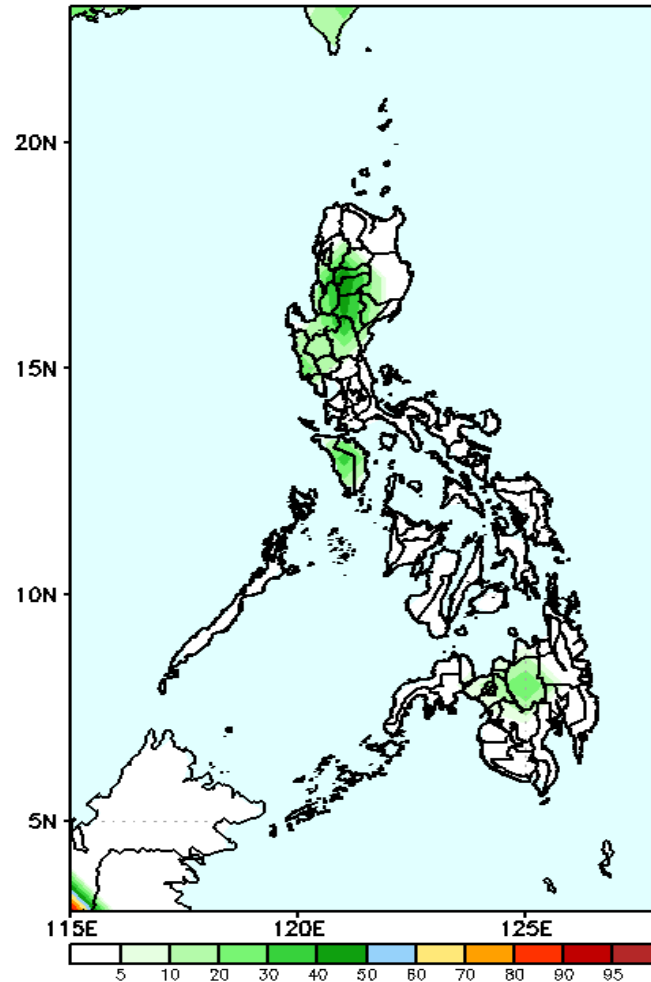
Week 2: Aug 13-19, 2020

GEFS Week-2 Exceedance Prob. > 100mm
Valid: 20200813 - 20200819



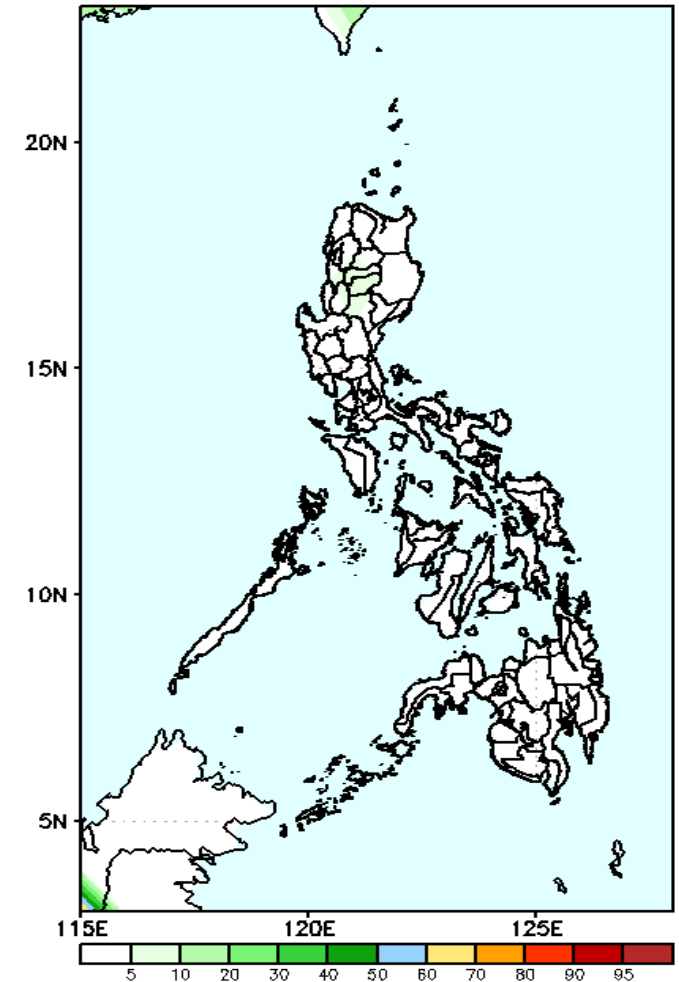
50-95% probability of rainfall to exceed 100mm in Cordillera Region, Bukidnon and Lanao del Sur while less likely for the rest of the country during the forecast period.

GEFS Week-2 Exceedance Prob. > 150mm
Valid: 20200813 - 20200819



Less probability of rainfall to exceed 150mm in most parts of the country during the forecast period.

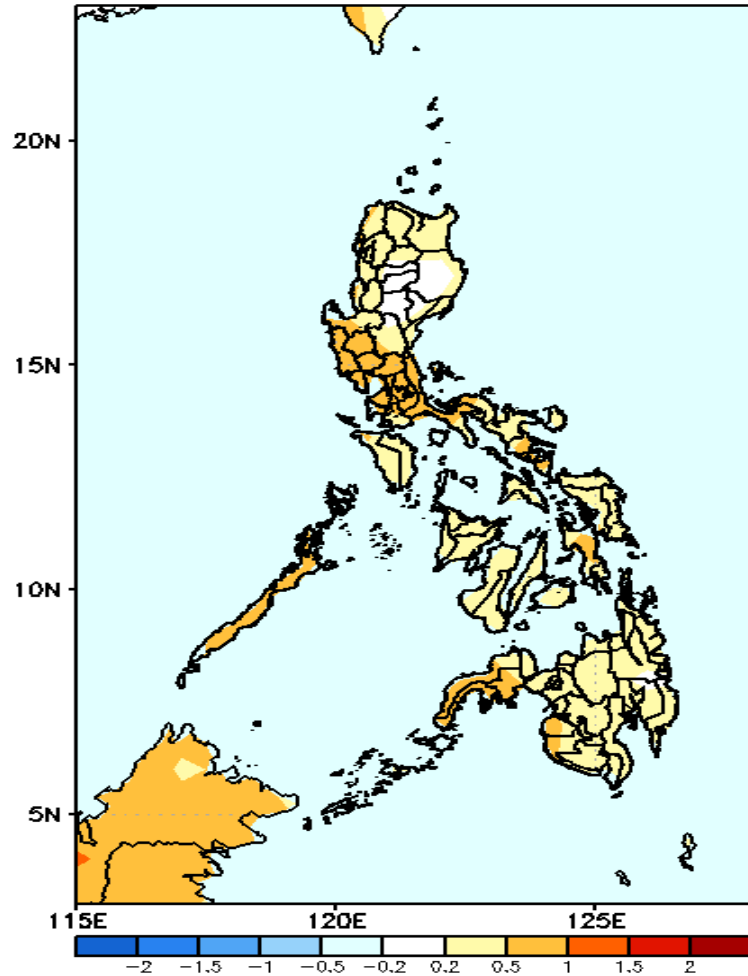
GEFS Week-2 Exceedance Prob. > 200mm
Valid: 20200813 - 20200819



Less probability of rainfall to exceed 200mm in most parts of the country during the forecast period.

GEFS Week-1 & 2 Forecasts: T2m Anomaly

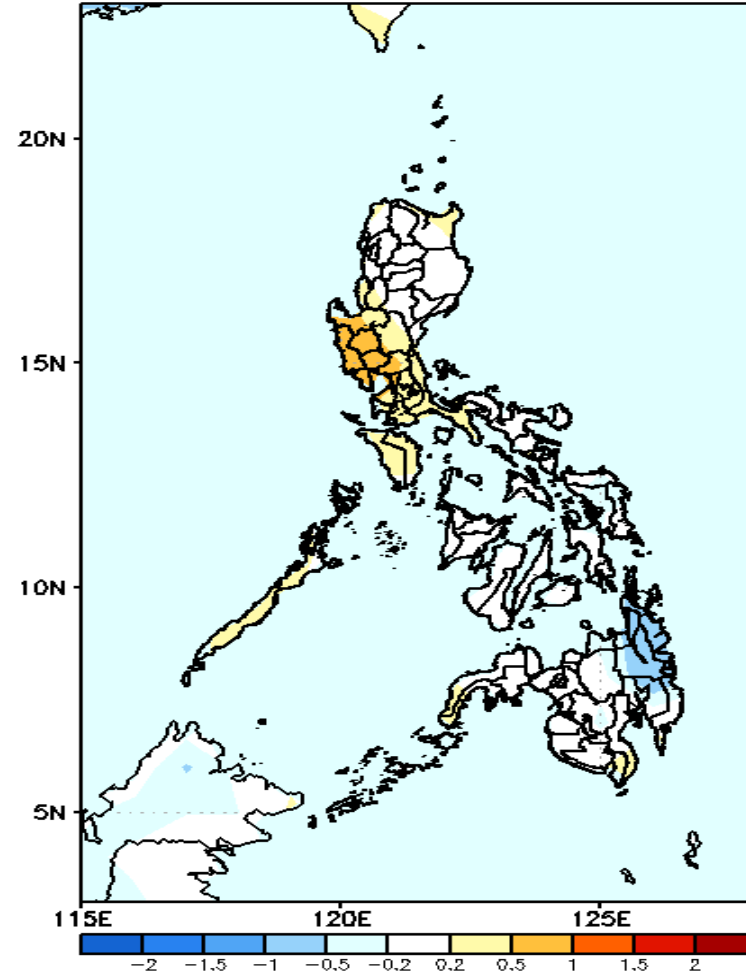
GEFS Week-1 T2m Anomaly
Valid: 20200806 - 20200812



2m Temperature Week 1: Aug 06-12, 2020

Average to slightly warmer than average surface air temperature will likely experience in most parts of the country during the forecast period.

GEFS Week-2 T2m Anomaly
Valid: 20200813 - 20200819



2m Temperature Week 2: Aug 13-19, 2020

Average to slightly warmer than average surface air temperature will likely experience in most parts Luzon while Average to slightly cooler temperature in eastern parts of Mindanao during the forecast period.